

# FAN COIL FILTERS

**Designed primarily for fan coil induction units, this slim design has three basic types and can be used for a wide variety of general applications.**

## Fixed Wire Frame

Strong steel wire covered with media fixed by stitching.

Medias -        Lofted polyester graded EU2  
                  Washable reticulated foam 30ppi  
                  Nylon 'fly screen' mesh 20ppi

Maximum overall depth of 5- 6mm

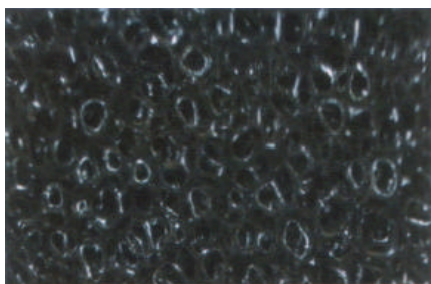
## Replaceable Sleeve

The same steel wire frame with a replaceable polyester filter 'sleeve'. Replacement sleeves can be made to suit existing frames.

## Pad & Frame

Galvanized steel holding frame approximately 10mm deep into which a removable pad is fixed in place by a steel wire 'W' clip, with a wide range of medias to suit - such as polyester and reticulated foam.

*Other materials available*



Reticulated Foam



Reverse View

Cleaning of these filters is by immersion in a mild detergent solution and rinsing with clean water or by vacuum cleaning. They are designed primarily for fan coil units or filter grilles etc, they provide low initial resistance and can be supplied either as a one piece integral element with media permanently stitched on or as a copper wire frame with a removable sleeve, which can be removed for easy cleaning.

### **Phoenix Filters**

15 Craven Street, Rossendale, Lancashire, BB4 8SW Tel: 01706 830511 Fax: 01706 600397  
Mobile 07812 339724    Vat Reg: 798 0184 88    e-mail [steve@airfilters.fsbusiness.co.uk](mailto:steve@airfilters.fsbusiness.co.uk)