

# ISP Stitching & Bindery Products

A Division Of Samuel Strapping Systems



## M-2000 Stitching Head

**Longer Life**

**Lower Maintenance . . .**

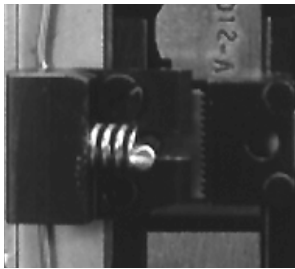
# The Next Generation... M-2000

ISP has done it again by taking stitching technology well beyond the next century.

- ❖ **Reduced Operating Force** — Componentry has been designed with optimized geometry to reduce operating forces, maximizing the interval between maintenance functions.
- ❖ **Wear Resistance Components** — Hardened tool steel parts that extend stitcher life, reduce downtime and lower maintenance.
- ❖ **Felt Wire Oiler/Cleaner** — Cleans and lubricates, providing greatly extended intervals between maintenance.

These features combined make the *NEW* M-2000 stitching head perform twenty times better than any previous design.

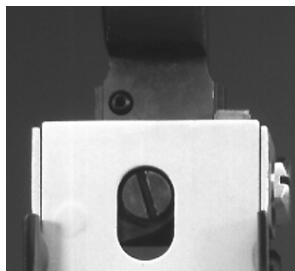
## M-2000 FEATURES:



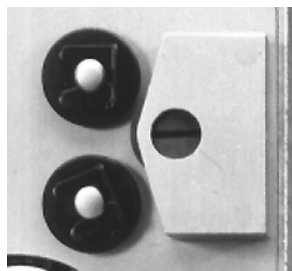
**EXTERNAL GRIP SPRING:**  
Guaranteed for life.



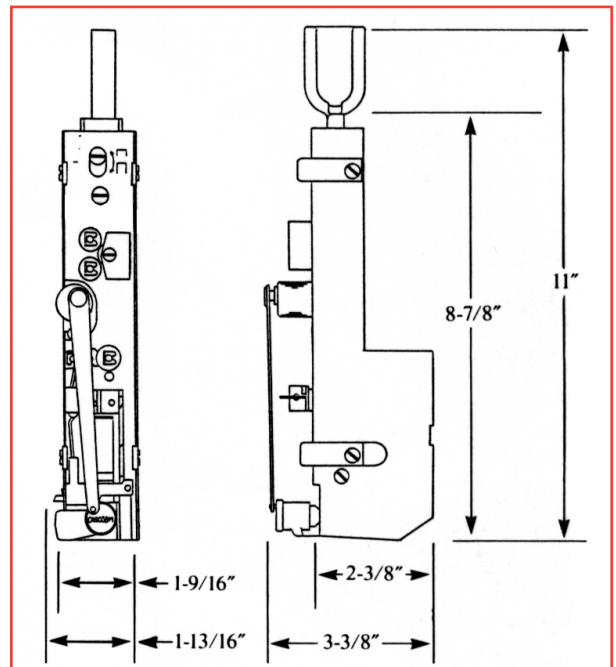
**M-2000 REDESIGNED MAGNETIC ROTATOR:**  
The exclusive rotator has no moving parts to bind or jam.



**EASY WORK THICKNESS ADJUSTMENT:**  
A single screw turn provides accurate, simple adjustment from minimum to maximum thickness.



**FACTORY-SET WIRE STRAIGHTENERS:**  
Virtually eliminates the need for straightener adjustments-forever!



### SPECIFICATIONS

Unit Weight:	6.5 Pounds
Crown Size:	1/2" (.480" actual)
Speed:	Up to 13,800 stitches per hour (230 stitches per minute)
Height:	11" plus wire guide spring
Width:	1.75" Minimum
Depth:	3.375"
Stitching Capacity:	1/4"
Wire Size:	No. 25 to No. 30 round (No. 24 to No. 28 round, and flat wire sizes available upon request)

Made with Pride in the USA

## ISP Stitching & Bindery Products

A Division Of Samuel Strapping Systems

USA:

3911 S. Memorial Drive • Racine, WI 53403  
1-800-345-6641 • 1-262-598-5421 • Fax: 1-262-598-5426  
Visit our Web-Site @ [www.ispstitching.com](http://www.ispstitching.com)