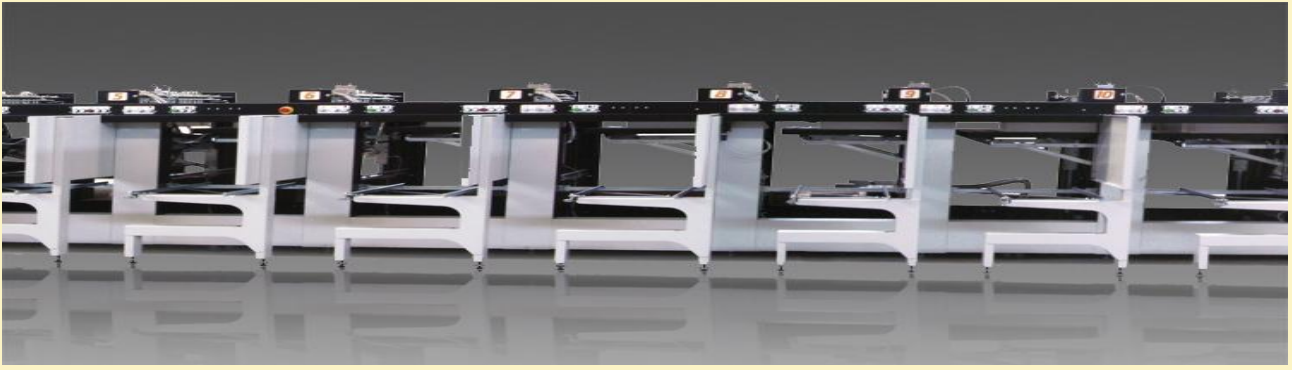


Me and my Maxima collators



A customer who uses two 50 x 70cm format Maxima collators was recently asked to give their views on the Maxima equipment they use for high intensity production of calendars and gave us the following opinions:-

How long have you been working with Maxima Collating equipment?

For over 15 years.

How would you compare them with other equipment you have used previously?

They are engineered to last unlike some other collators I have used.

What are the things that you like most about the Maxima?

Simple to operate and speed of set up, plus bulk pre-load facility.

What are the things that you like least about the Maxima?

UK support has been sporadic over the last few years, until Don Valley took over the agency.

Are they expensive and troublesome to maintain and do they need regular servicing to operate at peak performance?

Most minor breakdowns can be fixed by the operators, cost of ownership is no more than any other collator.

How accurate is the miss and double detection system?

Very accurate, which is crucial with our calendar products.

What kinds of stock will the Maxima struggle with?

Very glossy paper or varnished stock*, apart from that most stock is processed without difficulty. (*The latest Maxima machines have a tilt adjustment facility on the pick up bars which was not on the machines originally but has been provided for use on such stocks)

Given the choice would you change to another brand of collator or would you consider the purchase of another Maxima collator in the future?

Based on our experience, it would have to be Maxima for productivity and reliability.

Would you recommend these machines to another company and if so, what would be the number one reason?

As above, but not to our competition!

****The answers given above are “verbatim” and unaltered, nothing has been added or removed.***