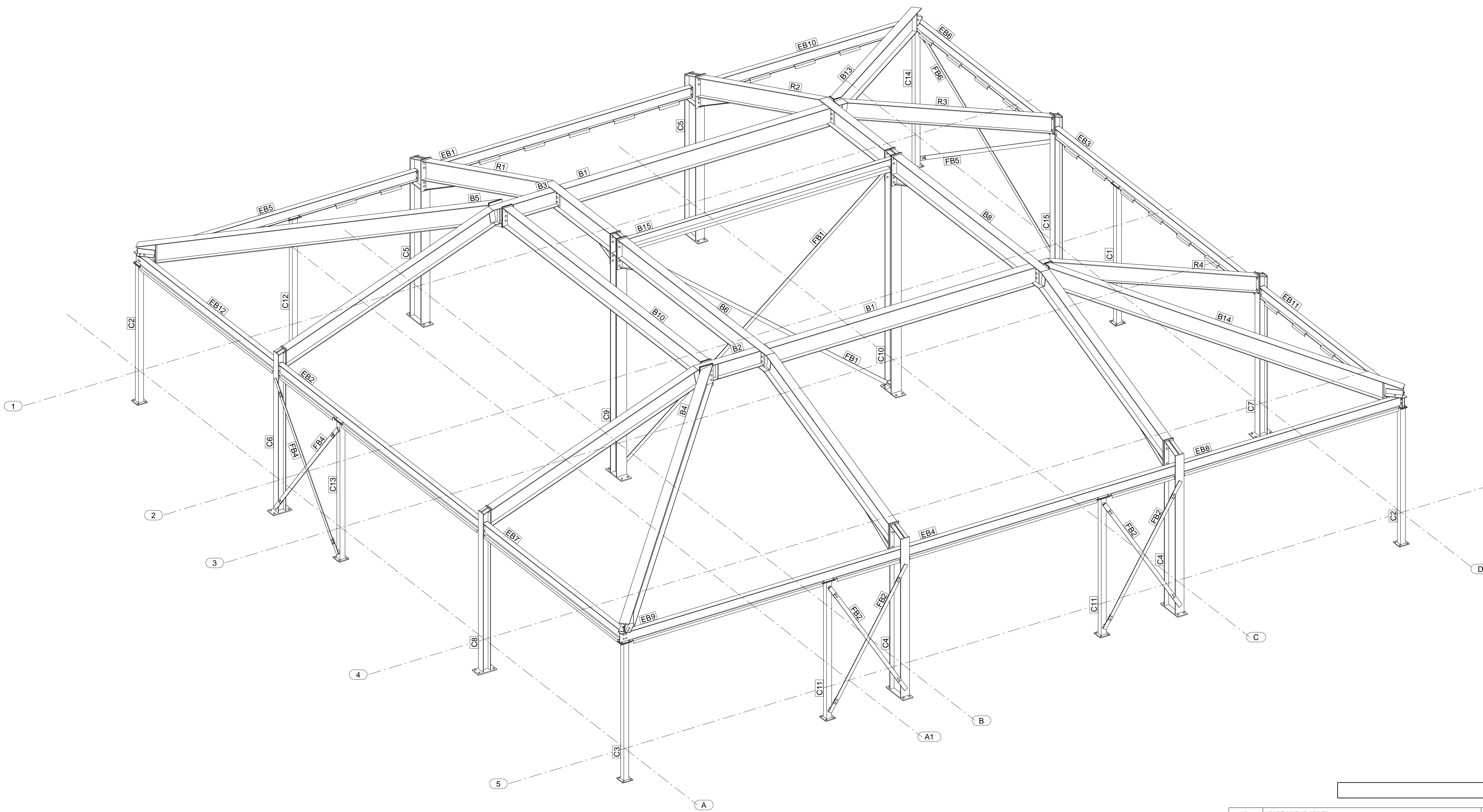
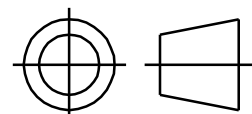


IF IN DOUBT ASK



3d

3	PART MARKS ADDED	08.06.06
2	ISSUED FOR CONSTRUCTION	06.06.06
1	ISSUED FOR APPROVAL	31.05.06
REV MARK	REVISION DESCRIPTION	REVISION DATE

DMW DMorgan Welding Limited
 Unit 2 - 70 Station Road Whitstable Kent. CT5 1LF
 T: 01227 273022 F: 01227 772358

DRAWING TITLE		
CONTRACT	Westlands School	
DRAWN BY	CONSTRUCTION	DATE 31.05.2006
CONTRACT No.	P-801	SCALE 1/33
DRAWING No.	P-801	GA-02 / 3