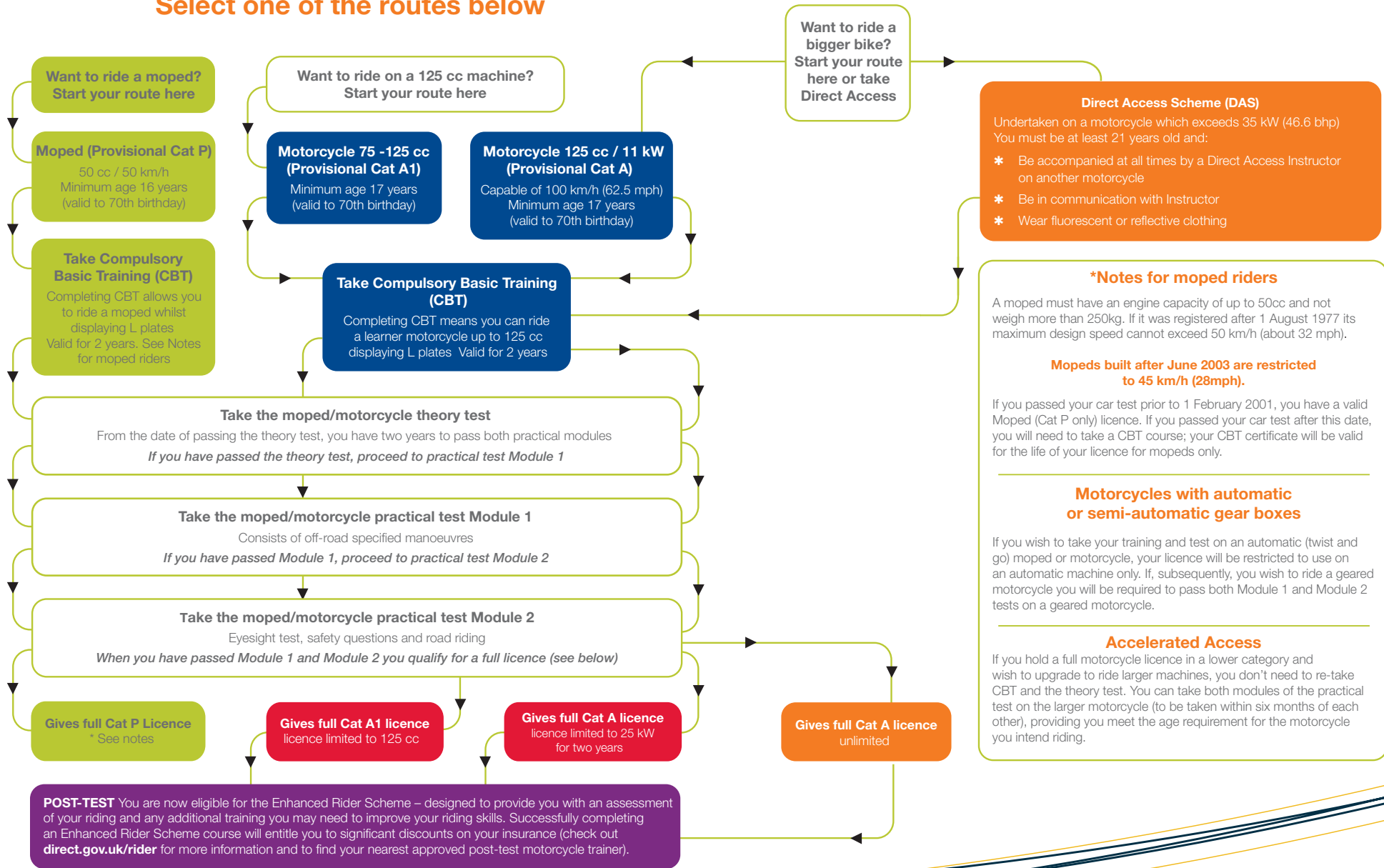


How to get a moped or motorcycle licence

Select one of the routes below



Direct Access Scheme (DAS)
Undertaken on a motorcycle which exceeds 35 kW (46.6 bhp)
You must be at least 21 years old and:

- * Be accompanied at all times by a Direct Access Instructor on another motorcycle
- * Be in communication with Instructor
- * Wear fluorescent or reflective clothing

***Notes for moped riders**
A moped must have an engine capacity of up to 50cc and not weigh more than 250kg. If it was registered after 1 August 1977 its maximum design speed cannot exceed 50 km/h (about 32 mph).

Mopeds built after June 2003 are restricted to 45 km/h (28mph).

If you passed your car test prior to 1 February 2001, you have a valid Moped (Cat P only) licence. If you passed your car test after this date, you will need to take a CBT course; your CBT certificate will be valid for the life of your licence for mopeds only.

Motorcycles with automatic or semi-automatic gear boxes

If you wish to take your training and test on an automatic (twist and go) moped or motorcycle, your licence will be restricted to use on an automatic machine only. If, subsequently, you wish to ride a geared motorcycle you will be required to pass both Module 1 and Module 2 tests on a geared motorcycle.

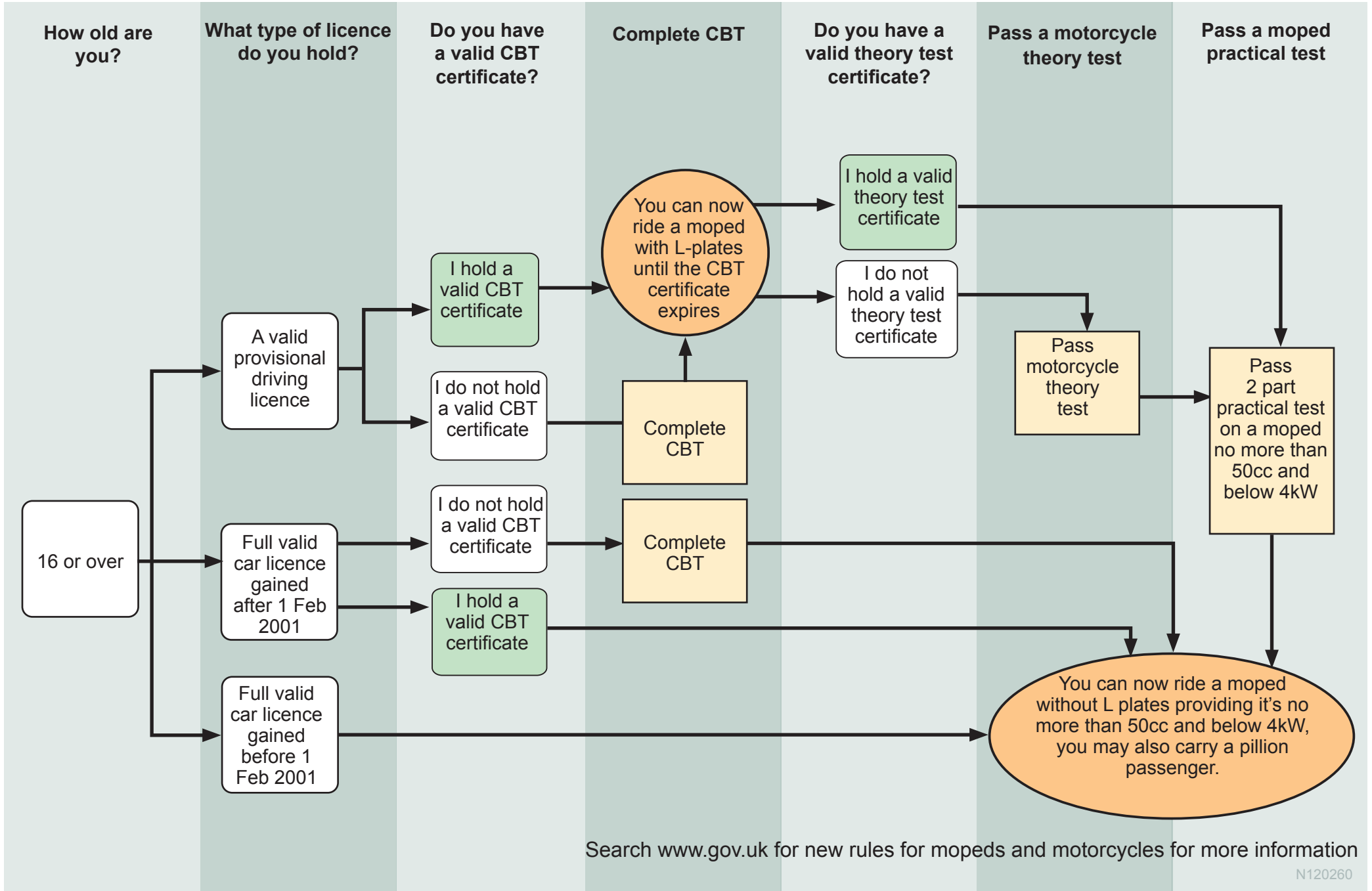
Accelerated Access

If you hold a full motorcycle licence in a lower category and wish to upgrade to ride larger machines, you don't need to re-take CBT and the theory test. You can take both modules of the practical test on the larger motorcycle (to be taken within six months of each other), providing you meet the age requirement for the motorcycle you intend riding.

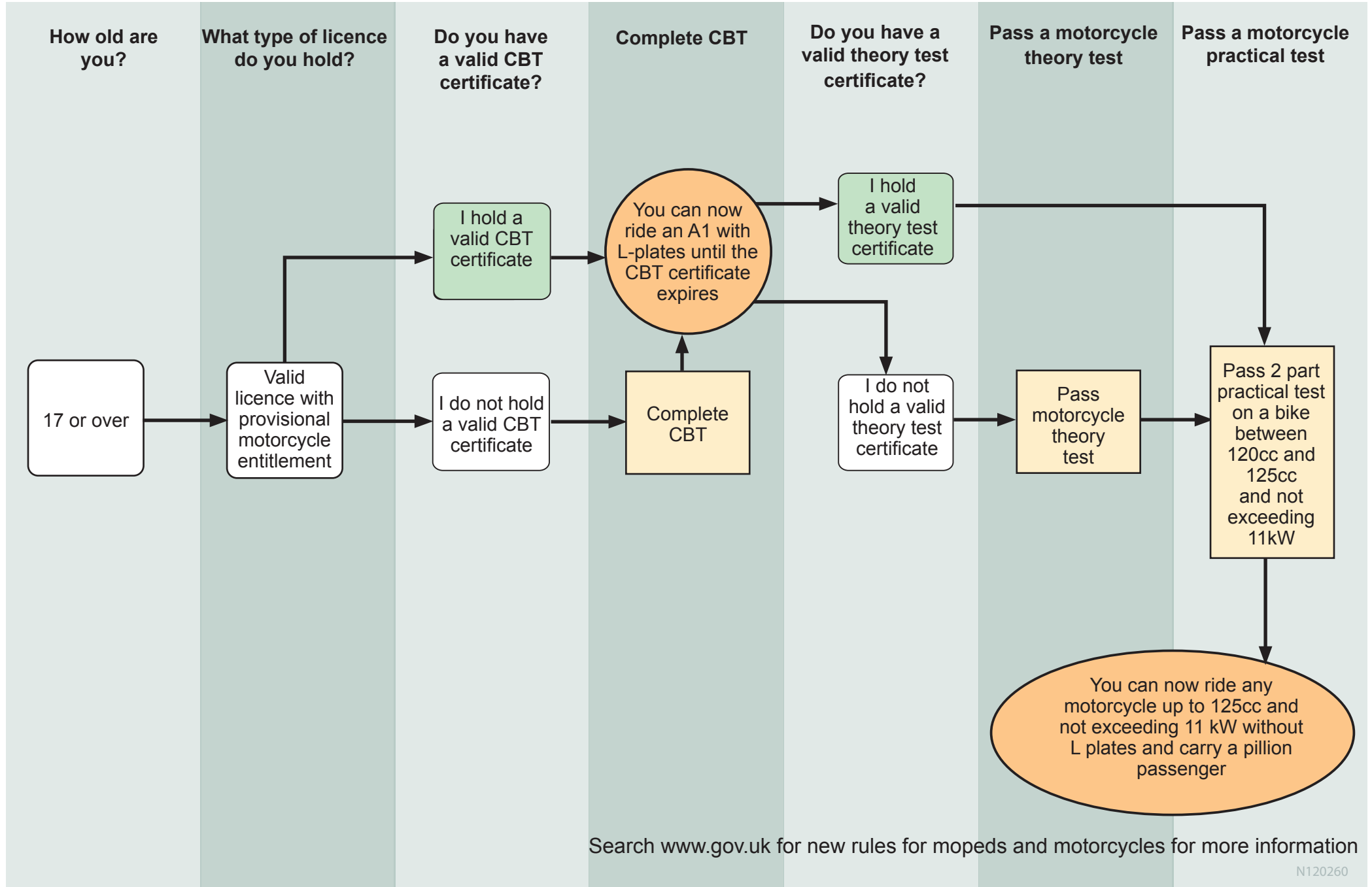
The routes to your motorcycle licence

Find out more about learning to ride at GOV.UK

Licence - AM Mopeds (50cc or less)

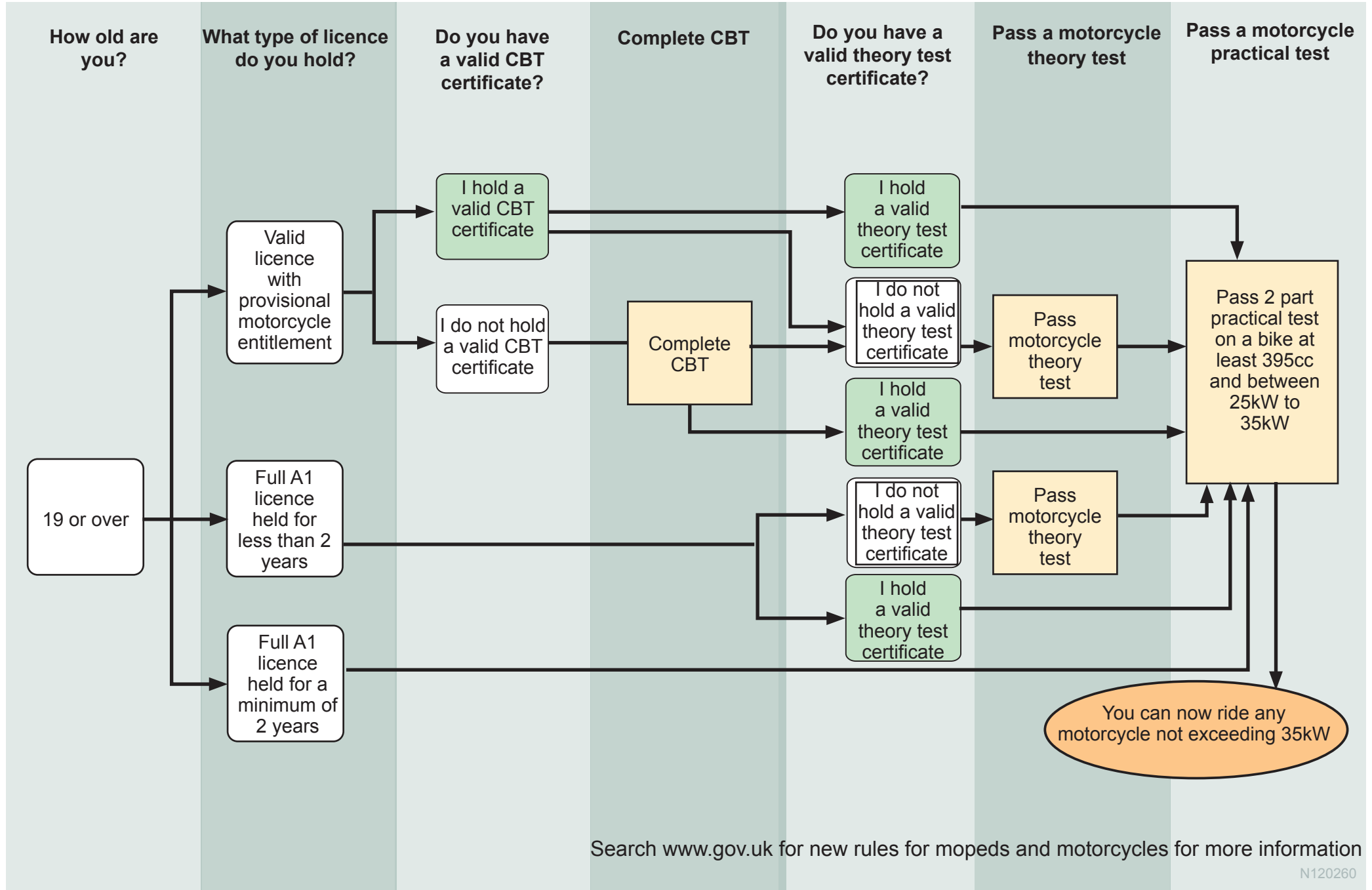


Licence - A1 light motorcycle (up to 125cc not exceeding 11kW)

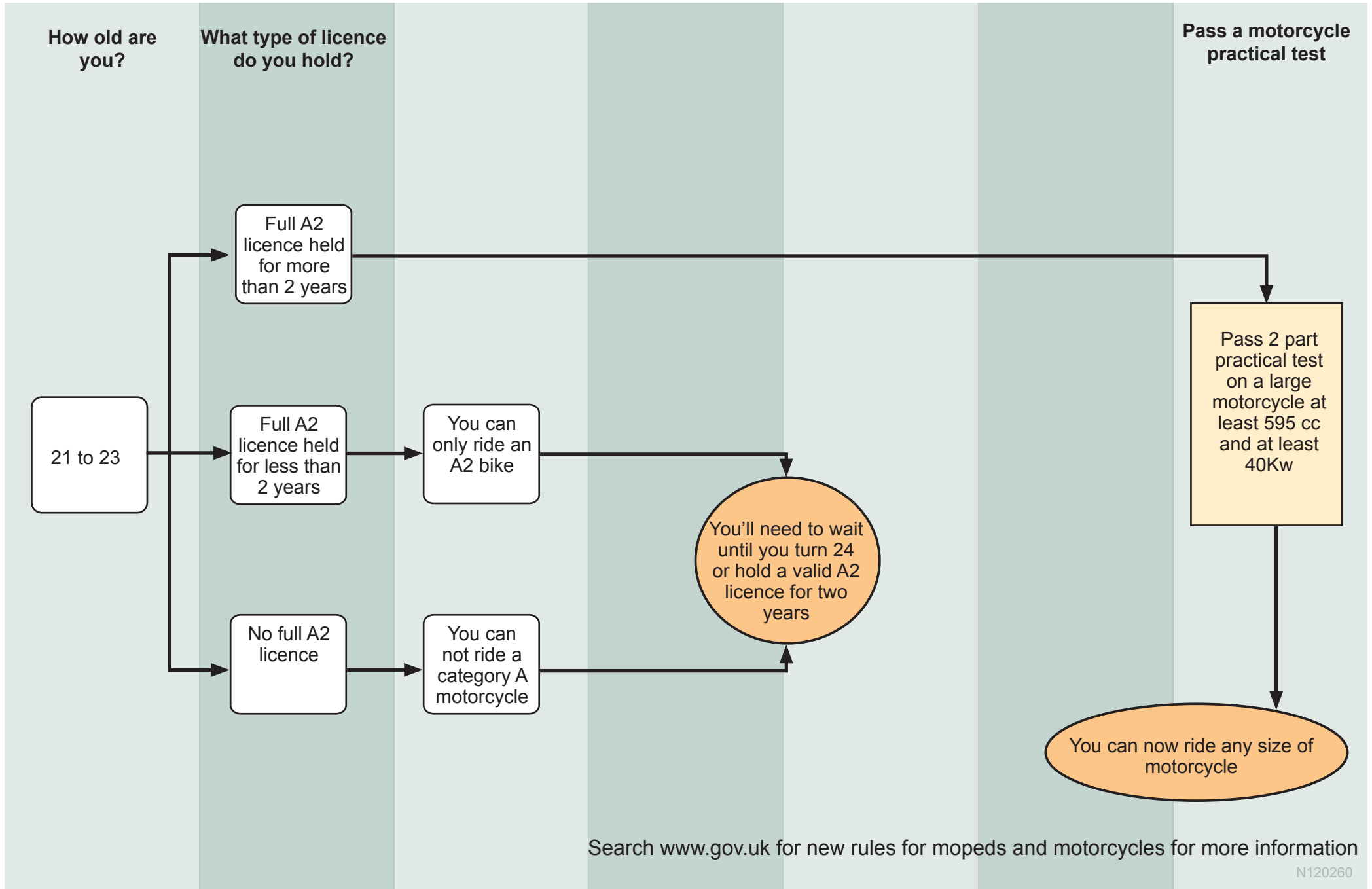




Licence - A2 motorcycle (medium motorcycles up to 35kW)



Licence - Category A motorcycle - unlimited in size and power (age 21 to 23)



Licence - Category A motorcycle unlimited in size and power (age 24 or over)

