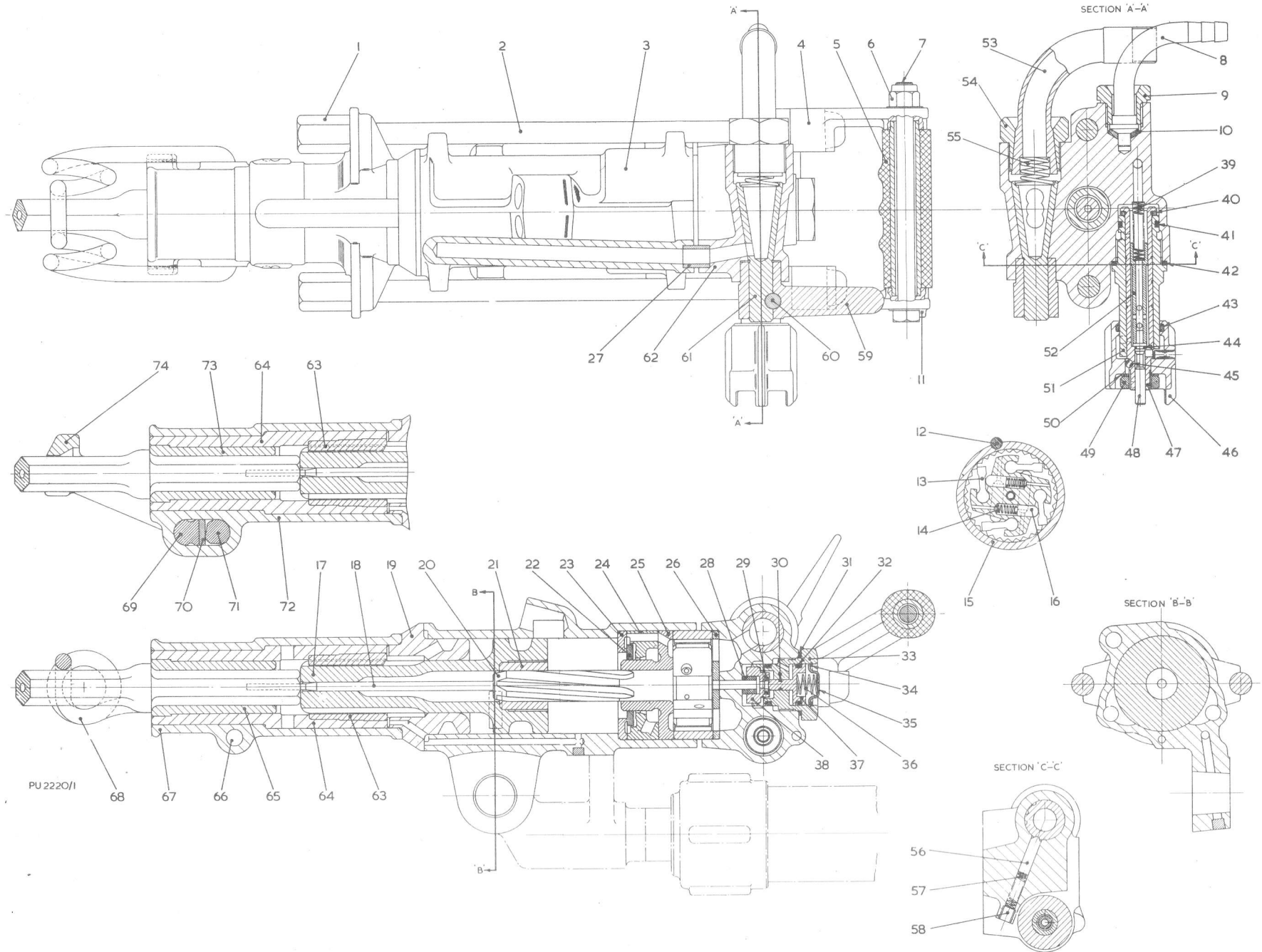


SILVER SPEAR INTEGRAL LEG DRILL



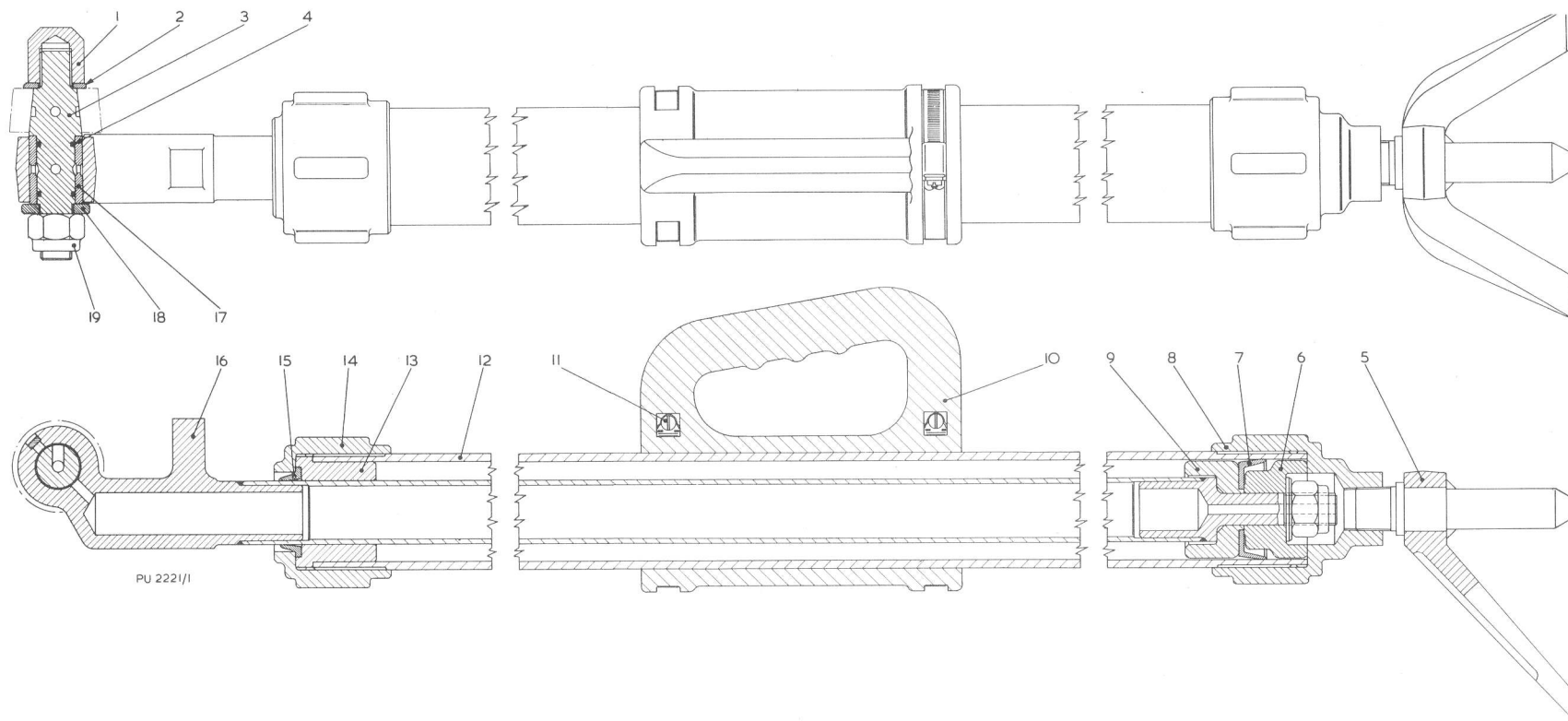
STANDARD BUILDS: WIRE OR FORGED RETAINER - 4 1/4 INCH x 7/8 INCH OR 1 INCH HEX SHANK

Ref. No.	Part No.	Name of Part	Qty.	Ref. No.	Part No.	Name of Part	Qty.
PARTS COMMON TO ALL BUILDS							
-	3215 A 00520	Side Rod Assembly	2	46	3203 C 00450	Handle	1
1	3005 B 00200	Nut	1	47	3203 C 00440	Tumbler	1
2	3005 B 00070	Side Rod	1	48	3203 B 00430	Valve (Pressure Release)	1
3	3215 F 00010	Cylinder	1	49	912003017	Lock Nut (5/8 in U.N.F.)	1
4	3215 C 00190	Bracket (Right Hand) - Handle	1	50	910007019	Washer (5/8 in, internal shakeproof)	1
5	3215 B 00270	Grip	1	51	3203 C 00261	Body (Airleg Control)	1
6	912150015	Nut (1/2 in U.N.F., Nyloc)	1	52	3203 B 00340	Spill Valve	1
7	913001167	Tie Bolt (1/2 in U.N.F. x 6 1/2 in long, hexagon head)	1	-	3215 A 00480	Back Head Assembly	1
8	3215 B 00410	Stem (Water Inlet)	1	-	3182 B 00600.	Air Swivel Stem and Nut Assembly	1
9	3215 B 00420	Nut - Water Inlet Stem	1	53	3182 C 00230	Nut	1
10	3215 B 00430	Seal - Water Inlet Stem	1	54	3182 C 00220	Swivel Stem	1
11	3215 C 00200	Bracket (Left Hand) - Handle	1	55	3215 B 00220	Spring	1
12	902001708	Dowel (5/16 in dia x 1 1/4 in long, plain) - Valve Chest	1	56	3215 B 00230	Plunger - Tumbler	1
13	3065 B 00560	Pawl - Ratchet	4	57	3215 B 00240	Spring - Tumbler Plunger	1
14	3059 B 00220	Spring	4	58	905002001	Plug (1/8 in B.S.P. x 3/4 in long, taper)	1
15	3215 B 00070	Ratchet Ring	1	59	3215 C 00120	Handle (Tumbler)	1
16	3059 B 00230	Plunger	4	60	3181 B 00200	Bolt	1
17	3215 D 00040	Piston	1	61	3215 C 00180	Tumbler	1
18	3215 B 00250	Water Tube	1	62	3215 F 00130	Back Head	1
19	3215 D 00020	Cylinder Washer	1	*	910009016	Washer (7/16 in, external shakeproof)	1
-	3065 A 02640	Rotation Assembly (1 in 30 Rotation)	1	*	912001014	Nut (7/16 in U.N.F.)	1
20	3065 C 00550	Rifle Bar	1	OTHER PARTS REQUIRED			
21	3065 B 00051	Rifle Nut	1	For Machine with Wire Retainer			
22	3215 B 00080	Valve	1	-	3215 A 00470	Chuck Assembly	1
23	3215 B 00100	Front End - Valve Chest	1	63	3215 B 00170	Guide Nut	1
24	3215 C 00090	Valve Chest	1	64	3065 D 01080	Chuck	1
25	3215 C 00110	Back End - Valve Chest	1	65	3065 C 06220	Chuck Bush	1
26	3215 B 00350	Wear Plate - Back Head	1	68	3065 C 01540	Retainer	1
27	3202 B 00160	Connector - Blowing Port	1	-	3215 A 00460	Chuck Assembly	1
*	3202 B 00170	Connector - Airleg Feed Port	1	63	3215 B 00170	Guide Nut	1
+ 28	3215 B 00330	Seal - Water Tube <i>3201800120</i>	1	64	3065 D 01080	Chuck	1
-	3215 A 00510	Water Control Valve Assembly	1	65	3065 D 02260	Chuck Bush	1
+ 29	3215 B 00340	Seat - Valve	1	66	3065 B 01530	Retainer	1
+ 30	915001008	'O' Ring (3/16 in i.d. x 5/16 in o.d.)	1	67	3215 D 00140	Bush - Retainer	2
+ 31	3215 B 00260	Washer - Back Head	1	For Machine with Forged Retainer			
+ 32	915001213	'O' Ring (15/16 in i.d. x 1 3/16 in o.d.)	2	69	3206 B 00510	Compression Pad	1
33	3215 B 00210	Plug - Back Head	1	70	3206 B 00540	Wear Plate	1
34	917001014	Clip (Retaining, internal)	1	71	3206 C 00340	Bolt - Retainer	1
35	3215 B 00310	Cap - Spring	1	72	3215 D 00600	Front Cover	1
36	3215 B 00320	Spring	1	*	912150015	Nut (1/2 in U.N.F., nyloc)	1
37	3215 B 00280	Valve - Water	1	-	3215 A 00470	Chuck Assembly	1
38	3215 B 00300	Holder - Seal	1	63	3215 B 00170	Guide Nut	1
-	3215 A 00530	Airleg Control Assembly	1	64	3065 D 01080	Chuck	1
+ 39	3203 B 00300	Spring (Pressure Release)	1	73	3065 C 06220	Chuck Bush	1
+ 40	3203 B 00310	Friction Washer	1	74	3206 C 00330	Retainer	1
+ 41	915001213	'O' Ring (15/16 in i.d. x 1 3/16 in o.d.)	1	-	3215 A 00460	Chuck Assembly	1
+ 42	3065 B 00930	Washer	1	63	3215 B 00170	Guide Nut	1
+ 43	915001216	'O' Ring (1 1/8 in i.d. x 1 3/8 in o.d.)	1	64	3065 D 01080	Chuck	1
+ 44	915001010	'O' Ring (1/4 in i.d. x 3/8 in o.d.)	1	73	3065 D 02260	Chuck Bush	1
+ 45	924070003	Steel Ball (3/16 in dia)	1	74	3206 C 00320	Retainer	1

* Not illustrated.
 + Seal kits are available for servicing of the water control valve and the airleg control. The Water Control Valve Seal Kit, part number 3215 A 00500, comprises items 28 to 32. The Airleg Control Seal Kit, part number 3215 A 00540, comprises items 39 to 45.

14421

AIRLEG



PU 2221/1

Ref. No.	Part No.	Name of Part	Qty.	Ref. No.	Part No.	Name of Part	Qty.
—	3038 F 05710	Airleg Assembly	1	10	3038 F 04700	Handle (Lifting)	1
1	3038 B 05690	Nut - Airleg Mount Pin	1	11	920001012	Clip (3½ in, to BS.400S, Jubilee)	2
2	910002012	Washer (¾ in, bright steel)	2	12	3038 C 05580	Cylinder	1
3	3038 C 05660	Pin (Airleg Mount)	1	13	3038 B 05620	Bush - Piston Rod	1
4	915001115	'O' Ring (11/16 in i.d. x 7/8 in o.d.)	2	14	3038 B 05590	End Cap (Top)	1
5	3038 C 05650	Sprag and Spike Assembly	1	15	3038 B 05640	Seal (Wiper)	1
6	3038 B 05630	Packing Washer (Bottom)	1	—	3038 A 05780	Piston Rod Assembly	1
7	3076 B 00581	Packing - Piston	1	16	3038 D 05770	Piston Rod	1
8	3038 B 05600	End Cap (Bottom)	1	17	3038 B 05760	Bush	1
9	3038 B 05610	Packing Washer (Top)	1	18	3038 B 05680	Washer - Airleg Mount	1
—	3038 A 05730	Handle Assembly	1	19	912150018	Nut (¾ in U.N.F., nyloc)	2