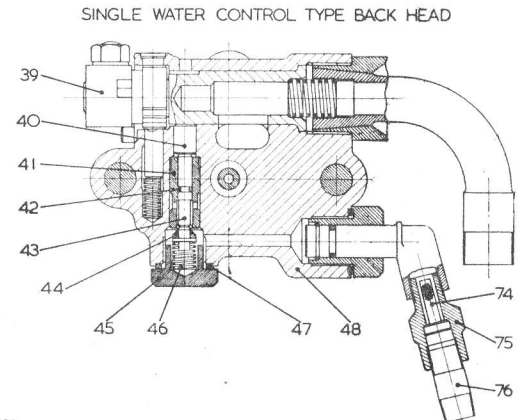
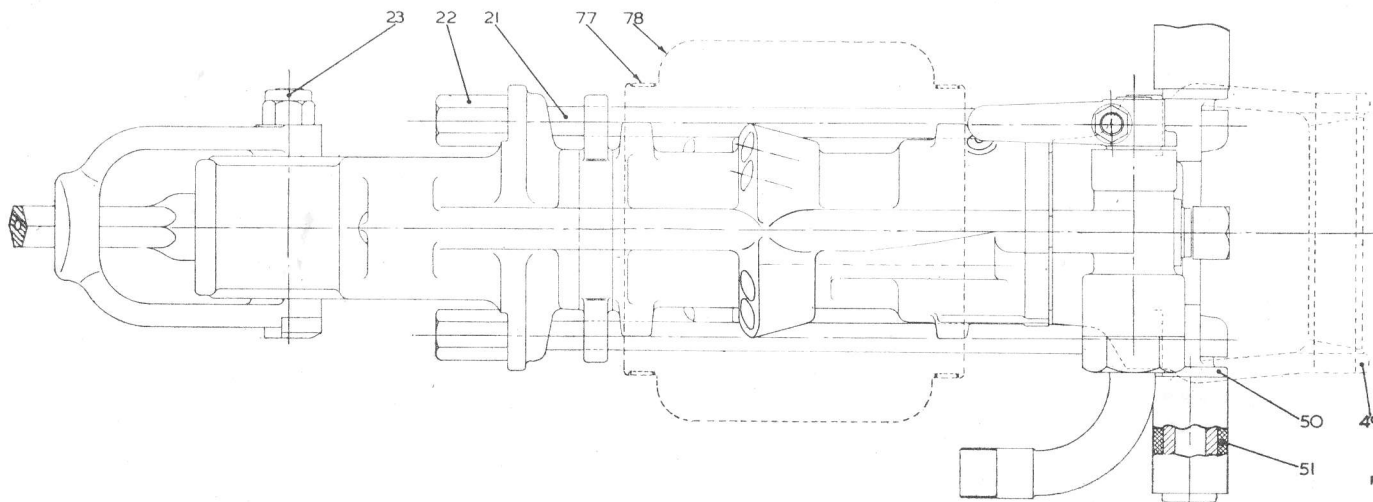
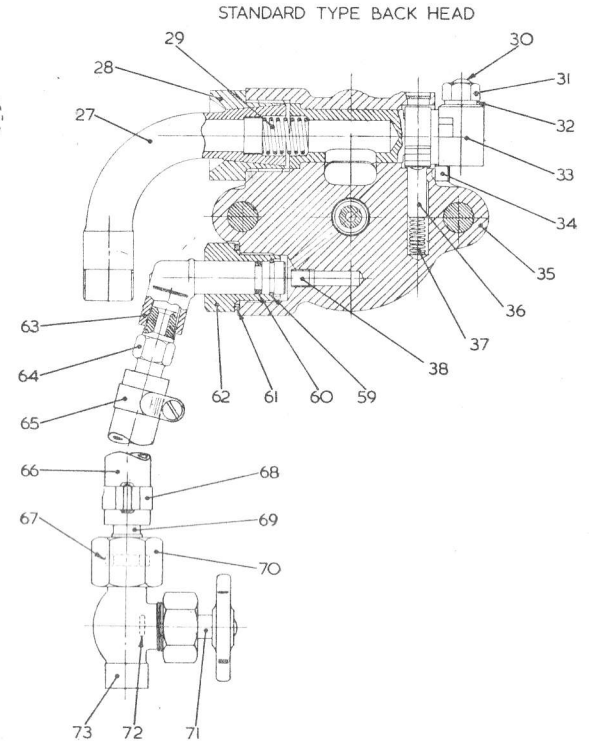
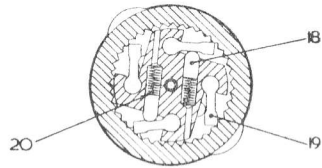
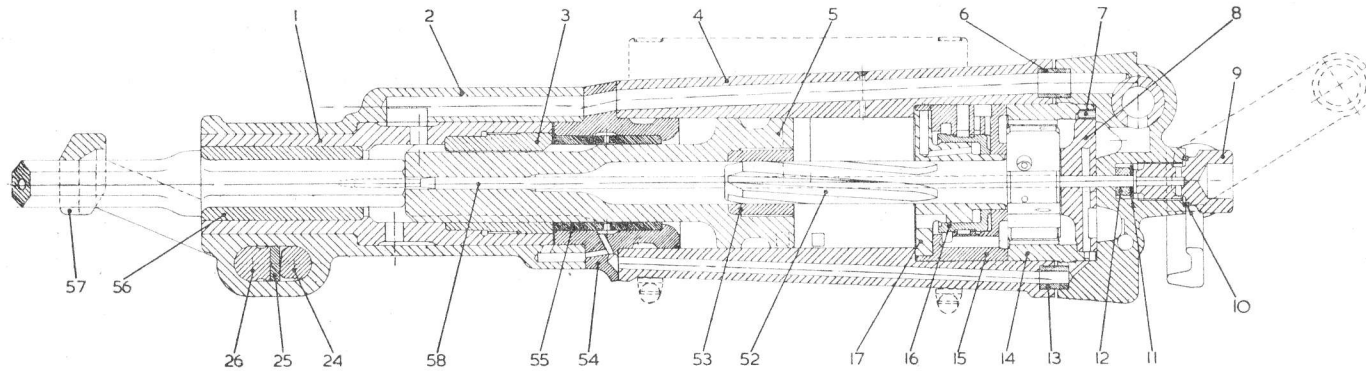


SILVER 70 SINKER

(Wet Type Illustrated)



35 3065 B 00051 Ring Nut 1

OTHER PARTS REQUIRED

For Standard Type Back Head

—	3202 A 00230	Back Head Assembly	1
—	3182 B 00600	Air Swivel Assembly	1
27	3182 C 00220	Stem (Air Inlet)	1
28	3182 C 00230	Nut—Air Inlet Stem	1
29	3202 B 00330	Spring—Tumbler	1
30	3181 B 00200	Bolt	1
31	912001014	Nut ($\frac{1}{8}$ in U.N.F.)	1
32	910009016	Washer ($\frac{1}{8}$ in external shakeproof)	1
33	3202 C 00120	Handle—Tumbler	1
34	—	Deleted	
35	3202 F 00130	Back Head with Tumbler	1
36	3048 B 00591	Plunger	1
37	3048 B 00580	Spring	1
38	905002001	Plug ($\frac{1}{8}$ in B.S.P. taper x $\frac{3}{8}$ in long)—Constant Blowing Hole	1

For Single Water Control Type Back Head

—	3202 A 00250	Back Head Assembly items 27 to 32, 36, 37 and the following items	1
39	3203 D 00120	Handle—Tumbler	1
40	3059 C 02840	Plunger—Valve Spill	1
41	3203 B 00210	Valve Guide	1
42	915001008	'O' Ring ($\frac{1}{8}$ in i.d. x $\frac{5}{16}$ o.d., Nitrile, Hardness 73° B.S.)	1
43	3065 B 05340	Valve Spill	1
44	3059 C 02870	Valve	1
45	3059 C 02880	Plug (Spring Retaining)	1
46	4068 B 00060	Spring	1
47	3059 C 02890	Washer	1
48	3202 F 00261	Back Head with Tumbler	1

Hardness 73° B.S.)

61	3182 B 00190	Washer	1
62	3201 B 00180	Nut	1
63	3201 B 00190	Swivel	1
64	3079 B 00050	Hose Stem	1
—	3031 A 01830	Hose Assembly	1
65	920001003	Clip (Jubilee Size OX)	1
†66	3031 A 04090	Hose (1ft length x $\frac{1}{2}$ in dia bore)	1
67	3117 C 00550	Washer	1
68	3031 A 03010	Clip	1
69	3079 B 00040	Tail End	1
70	3079 C 00020	Union Nut	1
—	3137 C 00900	Water Cock Assembly	1
71	3081 B 00120	Valve	1
72	3081 C 00060	Pad	1
73	3081 C 00010	Body—Valve	1

— **3201 A 00240** **Water Inlet Swivel Assembly (for Single Water Control Type Back Head)** **1**

items 59 to 63 and the following items

74	3201 B 00290	Filter	1
75	3201 B 00200	Adaptor	1
76	918037003	Barrel Nipple ($\frac{3}{8}$ in B.S.P.)	1

For Muffled Machine

77	920001017	Clip ($5\frac{1}{2}$ in to $6\frac{1}{2}$ in working diameter)	2
78	3206 D 00610	Muffler	1

For use with External Flushing Device and $4\frac{1}{2}$ in x $\frac{7}{8}$ in or 1in Hex External Flush Shank (Fitted to Standard Type Back Head Machine)

38	905002001	Plug ($\frac{1}{8}$ in B.S.P. taper x $\frac{3}{8}$ in long)—Constant Blowing Hole	1
*	3020 B 00230	Plug	1
*	3065 B 06300	Tube (Constant Blowing)	1
57	3206 C 00360	Retainer ($\frac{3}{8}$ in Hex)	1
57	3206 C 00350	Retainer (1in Hex)	1

* Not illustrated

† Quote length of hose required